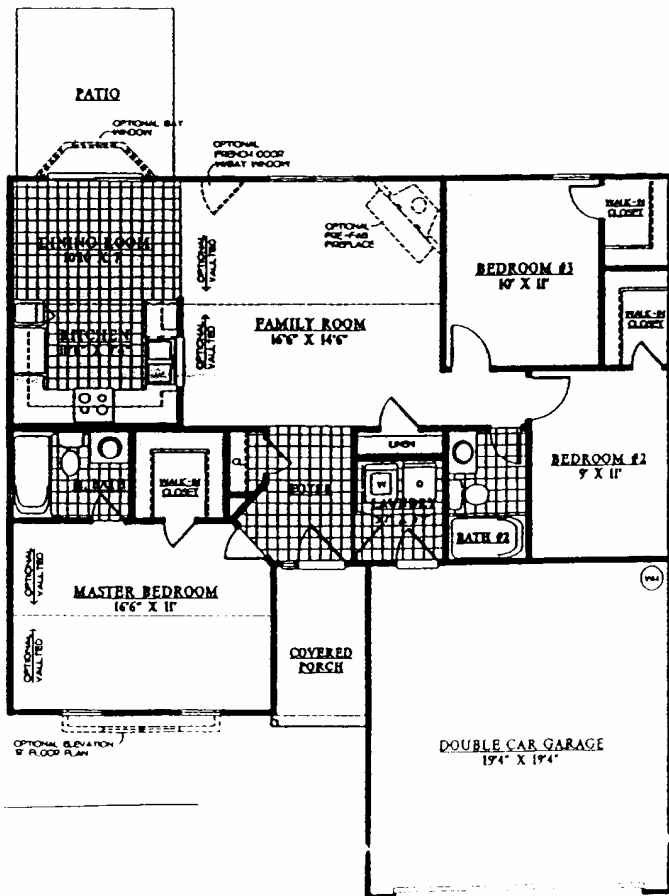


**COVINGTON**  
**12429 Cumberland Crest Dr**  
HUNTERSVILLE, NC 28078

**3BR, 2BA, Sunroom, Fireplace**  
**2 Car Garage, Built in 2000**

One month refundable security deposit

Directions: I77 to exit 23 east on Gilead towards town. Cross railroad tracks, continue to L into Covington subdivision, L on Cumberland Crest



For more information and to see  
photos visit  
[www.KenBloch.com](http://www.KenBloch.com)

**Ken Bloch**  
**704-502-3290**

[ken@kenbloch.com](mailto:ken@kenbloch.com)  
[www.KenBloch.com](http://www.KenBloch.com)

19721 Bethel Church Rd  
Cornelius, NC 28031

